



## Electrical Specifications

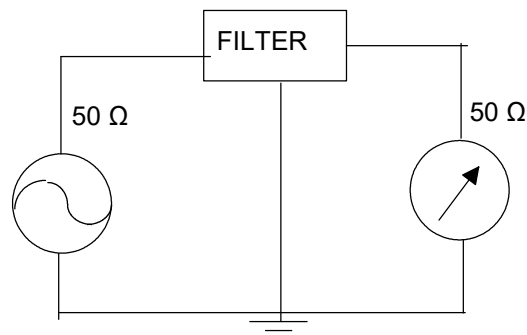
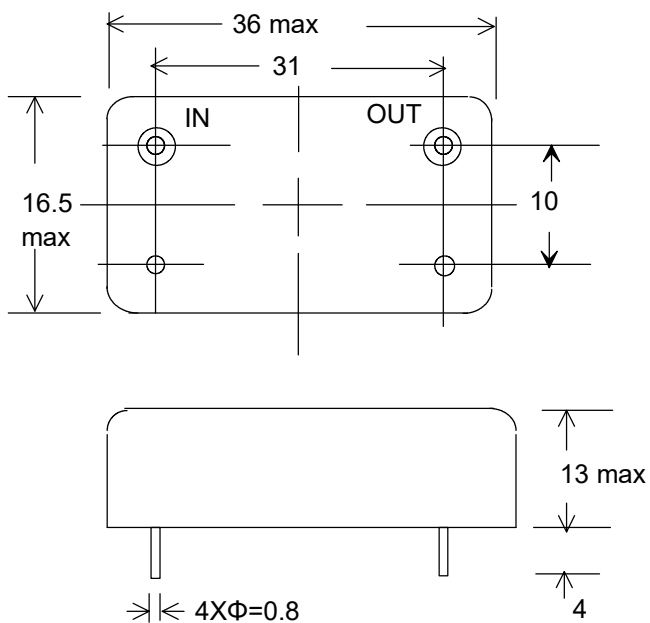
Center Frequency (Fo)	56 MHz
Passband Width @ -3 dB	+/- 100 KHz min
Ripple	1.5 dB max
Insertion Loss	5 dB max
Stopband	-50 dB min @ Fo +/- 500 KHz.
Ultimate	-50 dB from Fo+500 KHz up to 200 MHz
Spurious	-40 dB min
Impedance Zin = Zout	50 Ohms

## Operating Temperature

-40°C to +85°C

## Mechanical Drawing & Pin Connections

Drawing No: M8 & \$\$\$, !%



Unit in mm  
1mm = 0.0394 inches  
Tolerance : +/- 0.2 mm