



Electrical Specifications

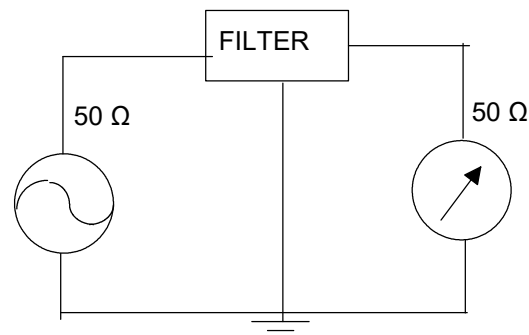
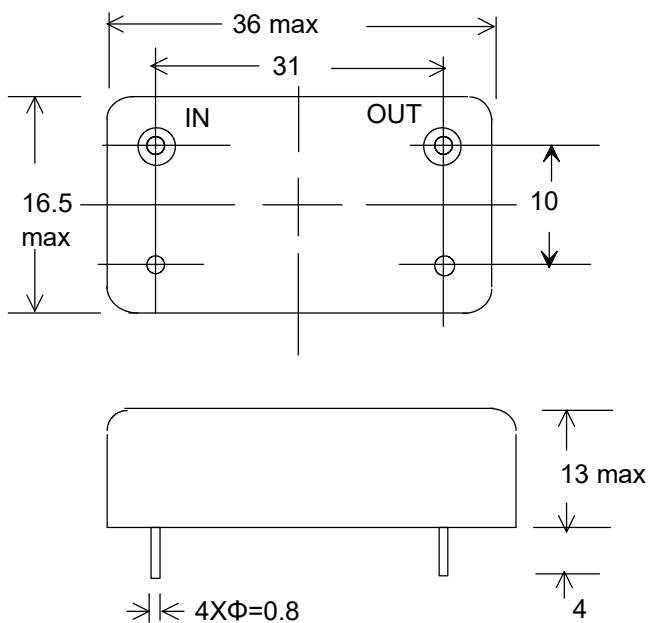
Center Frequency (Fo)	45 MHz
Passband Width @ -3 dB	+/- 55 KHz min
Ripple	1 dB max
Insertion Loss	3.5 dB max
Stopband	-40 dB min @ Fo +/- 300 KHz.
Ultimate	- 50 dB
Impedance Zin = Zout	50 Ohms

Operating Temperature

-40°C to +85°C

Mechanical Drawing & Pin Connections

Drawing No: M8 & \$\$\$, !%



Unit in mm
1mm = 0.0394 inches
Tolerance : +/- 0.2 mm