

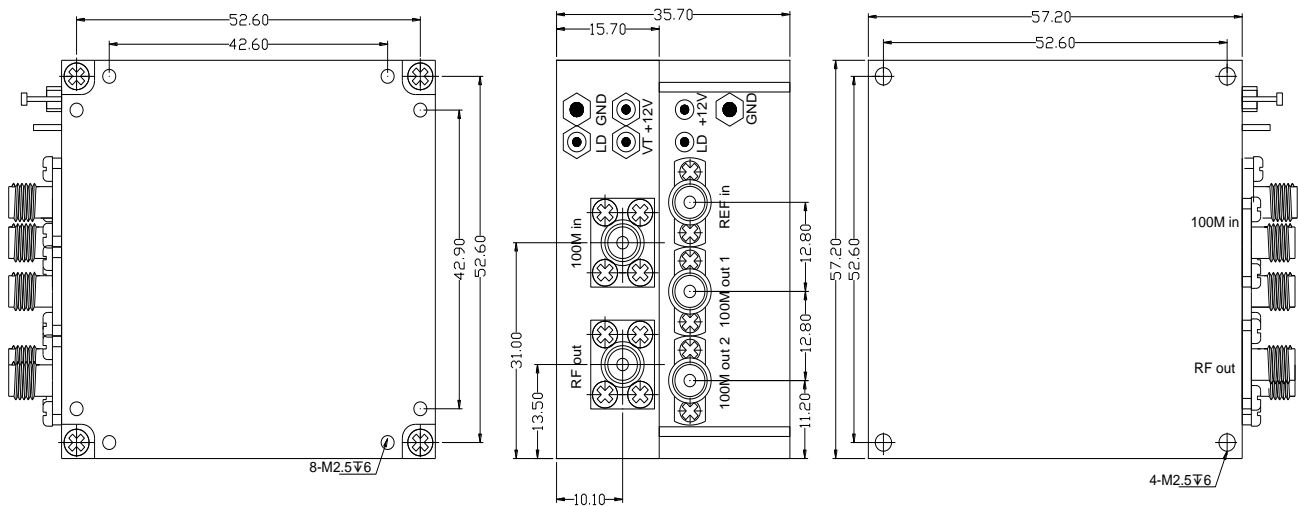


Features and Benefits

- Frequency range: 22GHz
- Supply voltage: +12V
- Steady current: 600mA/Max
- Output Power: +14.5dBm/Min
- Phase noise@100KHz: -113dBc/Hz
- Operating temperature: -40°C to +70°C
- Size: 57.2x57.2x35.7mm

Mechanical Drawing & Pin Connections

Drawing No: A8 & \$\$(!)%



Unit in mm
1mm = 0.0394 inches



Specifications

Oscillator Specification	Sym	Condition	Value			Unit	Note
			Min.	Typ.	Max.		
Operational Frequency				22		GHz	
RF Output							
Output Power			13	14.5		dBm	
Reference Signal			Internal				
Spurious				-75	-70	dBc	
Harmonics					-20	dBc	
Power Supply							
Supply Voltage				12		V	
Current				360	600	mA	
Frequency Stability							
Frequency Stability					±0.1	ppm	
Phase Noise		100Hz		-84	-80	dBc	
		1KHz		-103	-101	dBc	
		10kHz		-111	-110	dBc	
		100kHz		-113	-110	dBc	
		1MHz		-133	-132	dBc	
Environmental, Mechanical Conditions							
Operating temperature range	-40°C to +70°C						
Storage temperature range	-45°C to +75°C						
Vibration (operating)	10G RMS, 20-2000Hz						
Shock (non-operating)	50G, 1/2Sine, 12msec						
RF Connector	2.92mm Female						
DC Connector	PIN						
Weight	190g Max						
Phase Lock Signal	TTL Hight						