

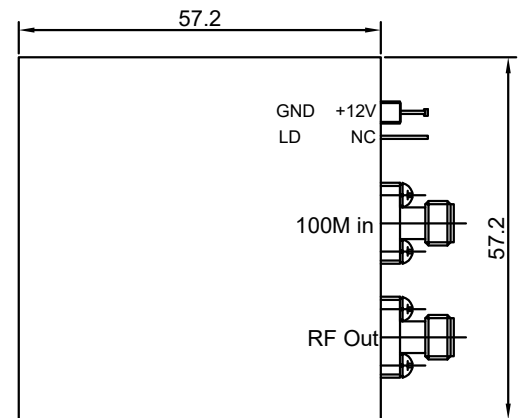
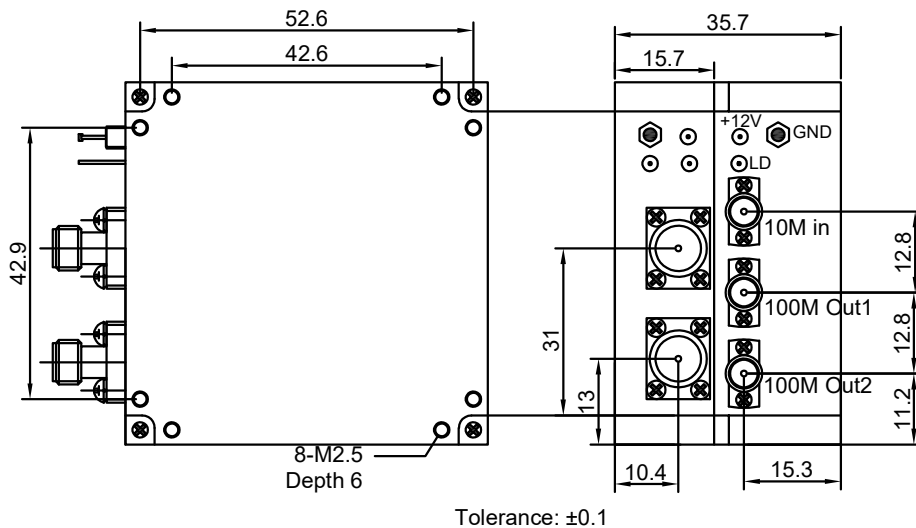


**Features and Benefits**

Frequency range: 8.6915GHz  
Supply voltage: +12V  
Steady current: 650mA/Max  
Output Power:+10dBm/Min  
Phase noise@100KHz: -125dBc/Hz  
Operating temperature: -40°C to +75°C  
Size: 57.2x57.2x35.7mm

**Mechanical Drawing & Pin Connections**

Drawing No: MD230040-1



Unit in mm  
1mm = 0.0394 inches



### Specifications

Oscillator Specification	Sym	Condition	Value			Unit	Note
			Min.	Typ.	Max.		
Operational Frequency				8.6915		GHz	
<b>RF Output</b>							
Output Power			10			dBm	
Spurious					-70	dBc	
Harmonics					-25	dBc	
Input Reference Frequency				10		MHz	No need connect with external reference 10MHz
Input Power			0		10	dBm	
<b>Power Supply</b>							
Supply Voltage				12		V	
Current					650	mA	
<b>Frequency Stability</b>							
Phase noise		10Hz			-52	dBc	
		100Hz			-85	dBc	
		1KHz			-106	dBc	
		10kHz			-120	dBc	
		100kHz			-125	dBc	
		1MHz			-135	dBc	
<b>Environmental, Mechanical Conditions</b>							
Operating temperature range	-40°C to +75°C						
Storage temperature range	-55°C to +85°C						
RF Connection	SMA-KFD						
Power Supply Connection	Feed-through capacitor						
Phase Lock Signal	High Level TTL						